
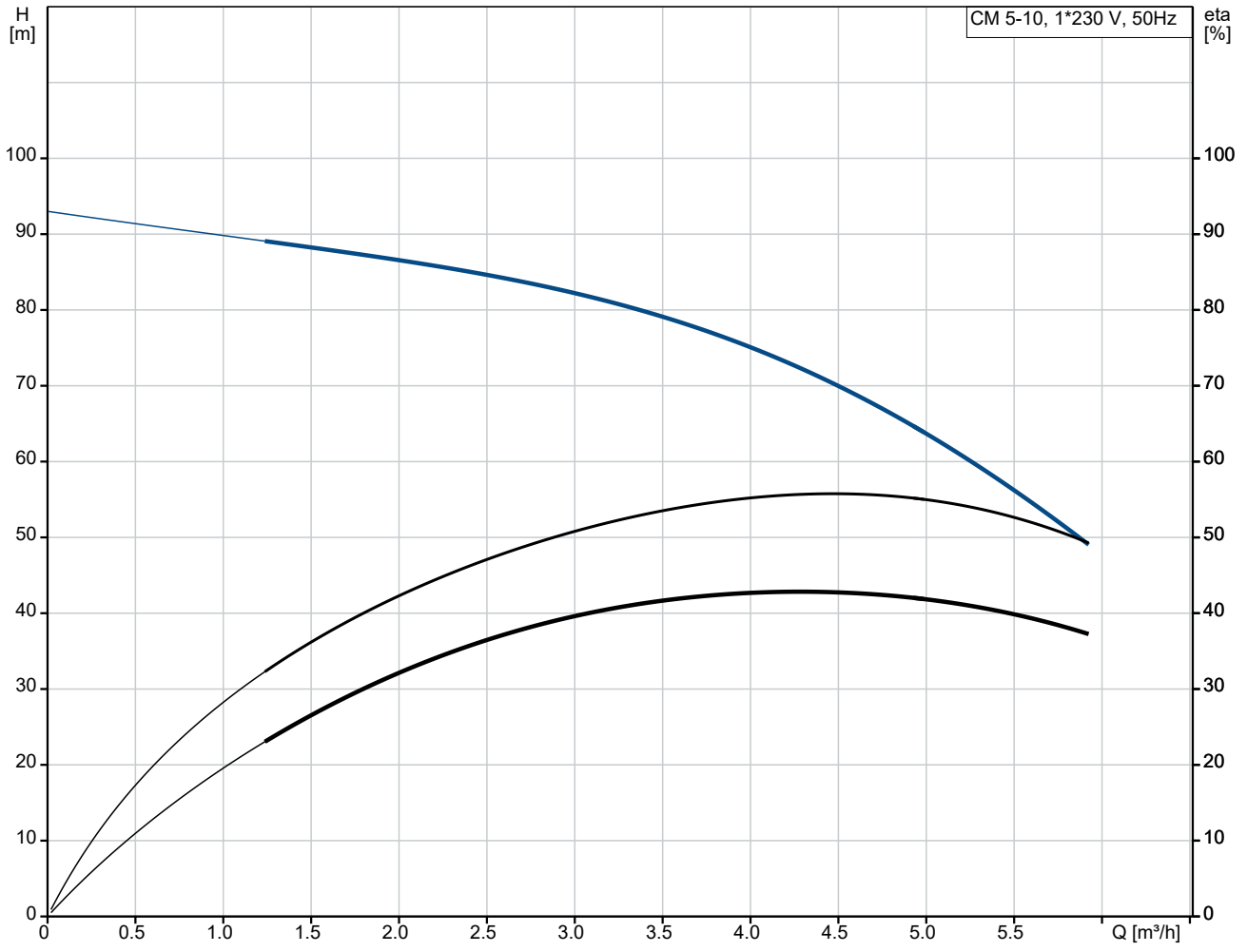


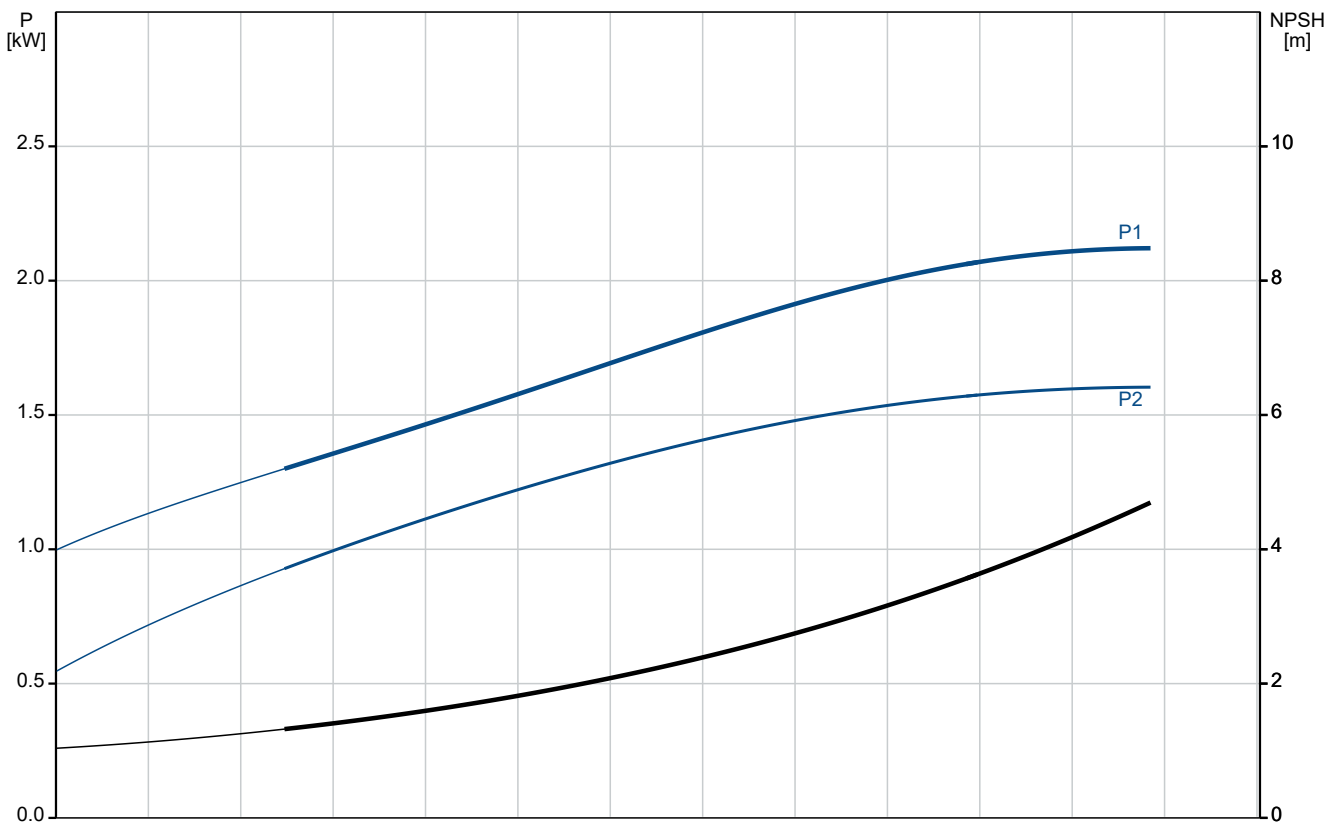
Qty.	Description
1	<p data-bbox="196 159 576 188"><b>CM 5-10 A-R-G-V-AQQV C-A-A-N</b></p>  <p data-bbox="592 506 1066 530" style="text-align: center;"><b>Note! Product picture may differ from actual product</b></p> <p data-bbox="196 539 480 564">Product No.: On request</p> <p data-bbox="196 600 1463 674">Compact, reliable, horizontal, multistage, end-suction centrifugal pump with axial suction port and radial discharge port. Pump materials in contact with the liquid are in high-grade stainless steel. The mechanical shaft seal is a special designed, unbalanced O-ring seal. Pipework connection is via internal Whitworth pipe threads, Rp (ISO 7/1).</p> <p data-bbox="196 710 1074 734">The pump is fitted with a 1-phase, foot-mounted, fan-cooled asynchronous motor.</p> <p data-bbox="196 770 300 795"><b>Controls:</b></p> <p data-bbox="196 797 638 822">Frequency converter:                   NONE</p> <p data-bbox="196 857 276 882"><b>Liquid:</b></p> <p data-bbox="196 884 635 909">Pumped liquid:                           Water</p> <p data-bbox="196 911 691 936">Liquid temperature range:           -20 .. 90 °C</p> <p data-bbox="196 938 628 963">Selected liquid temperature:       20 °C</p> <p data-bbox="196 965 695 990">Density:                                   998.2 kg/m<sup>3</sup></p> <p data-bbox="196 1025 316 1050"><b>Technical:</b></p> <p data-bbox="196 1052 820 1077">Pump speed on which pump data are based:   2900 rpm</p> <p data-bbox="196 1079 655 1104">Rated flow:                               4.7 m<sup>3</sup>/h</p> <p data-bbox="196 1106 655 1131">Rated head:                               78.25 m</p> <p data-bbox="196 1133 638 1158">Code for shaft seal:                   AQQV</p> <p data-bbox="196 1160 730 1184">Approvals:                               CE,EAC,UKCA</p> <p data-bbox="196 1187 754 1211">Approvals for drinking water:       WRAS,ACS,UBA</p> <p data-bbox="196 1214 759 1238">Curve tolerance:                       ISO9906:2012 3B</p> <p data-bbox="196 1274 308 1299"><b>Materials:</b></p> <p data-bbox="196 1301 724 1375">Pump housing:                           Stainless steel EN 1.4401 AISI 316</p> <p data-bbox="196 1388 724 1462">Impeller:                                 Stainless steel EN 1.4401 AISI 316</p> <p data-bbox="196 1498 325 1523"><b>Installation:</b></p> <p data-bbox="196 1525 691 1550">Range of ambient temperature:       -20 .. 55 °C</p> <p data-bbox="196 1552 638 1576">Maximum operating pressure:       16 bar</p> <p data-bbox="196 1579 718 1653">Max pressure at stated temp:       16 bar / 90 °C 16 bar / 90 °C</p> <p data-bbox="196 1666 675 1740">Type of connection:                   Rp</p> <p data-bbox="196 1688 675 1713">Size of inlet connection:           1 1/4 inch</p> <p data-bbox="196 1715 638 1740">Size of outlet connection:          1 inch</p> <p data-bbox="196 1742 595 1767">Outlet position:                       12</p> <p data-bbox="196 1803 363 1827"><b>Electrical data:</b></p> <p data-bbox="196 1830 608 1854">Motor standard:                       IEC</p> <p data-bbox="196 1856 628 1881">Frame size:                             90SB</p> <p data-bbox="196 1883 643 1908">Rated power - P2:                     1.7 kW</p> <p data-bbox="196 1910 635 1935">Mains frequency:                     50 Hz</p> <p data-bbox="196 1937 584 1962">Suitable for 50/60 Hz:               N</p> <p data-bbox="196 1964 743 1989">Rated voltage:                         1 x 220-240 V V</p> <p data-bbox="196 1991 616 2016">Service factor:                       1.00</p> <p data-bbox="196 2018 695 2042">Rated current:                         11.2-10.0 A</p>

Qty.	Description
1	<p>Starting current: 370-370 %  Rated speed: 2740-2755 rpm  Enclosure class (IEC 34-5): IP55  Insulation class (IEC 85): F  Built-in motor protection: PTO  Cable included (Yes/No): N</p> <p>Others:  Terminal box position: 12  Minimum efficiency index, MEI ≥: 0.7  Net weight: 25.3 kg  Gross weight: 27.8 kg  Country of origin: TW  Custom tariff no.: 84137042</p>

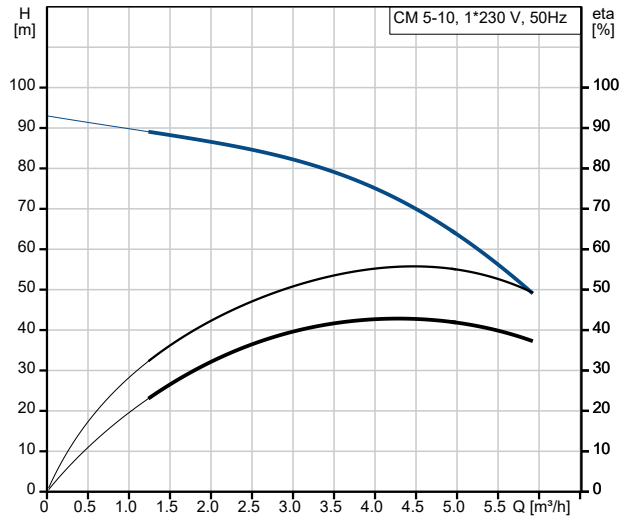
# On request CM 5-10 A-R-G-V-AQQV C-A-A-N 50 Hz



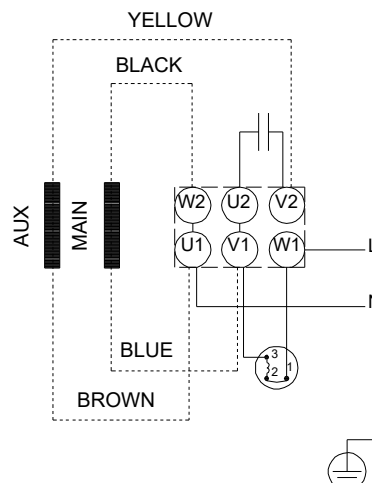
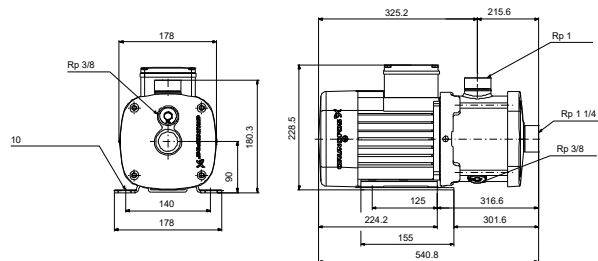
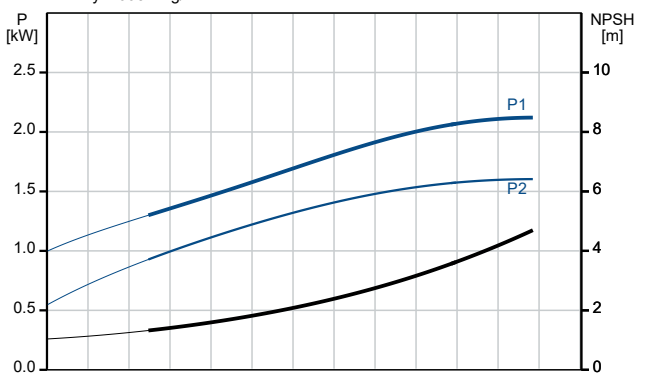
Pumped liquid = Water  
 Liquid temperature during operation = 20 °C  
 Density = 998.2 kg/m³



Description	Value
<b>General information:</b>	
Product name:	CM 5-10 A-R-G-V-AQQV C-A-A-N
Product No:	On request
EAN number:	On request
<b>Technical:</b>	
Pump speed on which pump data are based:	2900 rpm
Rated flow:	4.7 m <sup>3</sup> /h
Rated head:	78.25 m
Impellers:	10
Code for shaft seal:	AQQV
Approvals:	CE,EAC,UKCA
Approvals for drinking water:	WRAS,ACS,UBA
Curve tolerance:	ISO9906:2012 3B
Pump version:	A
Model:	A
<b>Materials:</b>	
Pump housing:	Stainless steel
Pump housing:	EN 1.4401
Pump housing:	AISI 316
Impeller:	Stainless steel
Impeller:	EN 1.4401
Impeller:	AISI 316
Material code:	G
Code for rubber:	V
<b>Installation:</b>	
Range of ambient temperature:	-20 .. 55 °C
Maximum operating pressure:	16 bar
Max pressure at stated temp:	16 bar / 90 °C
Max pressure at stated temp:	16 bar / 90 °C
Type of connection:	Rp
Size of inlet connection:	1 1/4 inch
Size of outlet connection:	1 inch
Outlet position:	12
Connect code:	R
<b>Liquid:</b>	
Pumped liquid:	Water
Liquid temperature range:	-20 .. 90 °C
Selected liquid temperature:	20 °C
Density:	998.2 kg/m <sup>3</sup>
<b>Electrical data:</b>	
Motor standard:	IEC
Frame size:	90SB
Rated power - P2:	1.7 kW
Mains frequency:	50 Hz
Suitable for 50/60 Hz:	N
Rated voltage:	1 x 220-240 V V
Service factor:	1.00
Rated current:	11.2-10.0 A
Starting current:	370-370 %
Rated speed:	2740-2755 rpm
Enclosure class (IEC 34-5):	IP55
Insulation class (IEC 85):	F
Built-in motor protection:	PTO
Cable included (Yes/No):	N
<b>Controls:</b>	
Frequency converter:	NONE
<b>Others:</b>	
Terminal box position:	12
Minimum efficiency index, MEI ≥:	0.7
Net weight:	25.3 kg
Gross weight:	27.8 kg
Country of origin:	TW



Pumped liquid = Water  
Liquid temperature during operation = 20 °C  
Density = 998.2 kg/m<sup>3</sup>

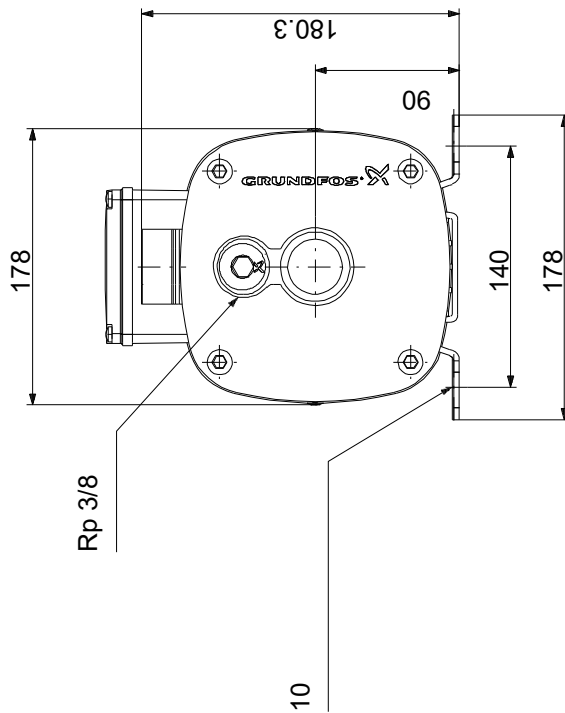
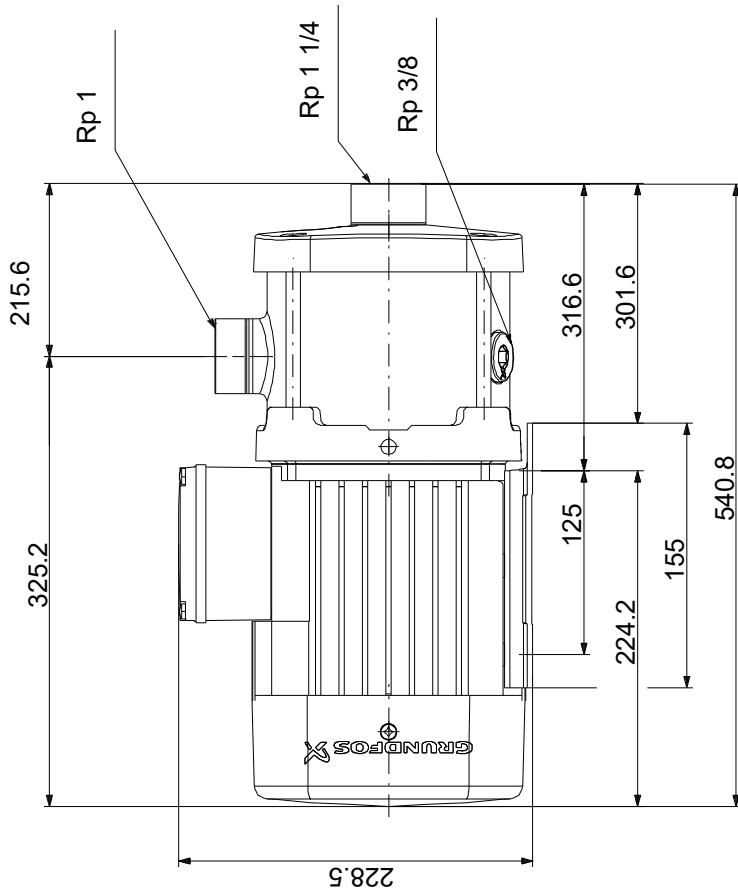


**Description****Value**

Custom tariff no.:

84137042

# On request CM 5-10 A-R-G-V-AQQV C-A-A-N 50 Hz



Note! All units are in [mm] unless others are stated.  
 Disclaimer: This simplified dimensional drawing does not show all details.