
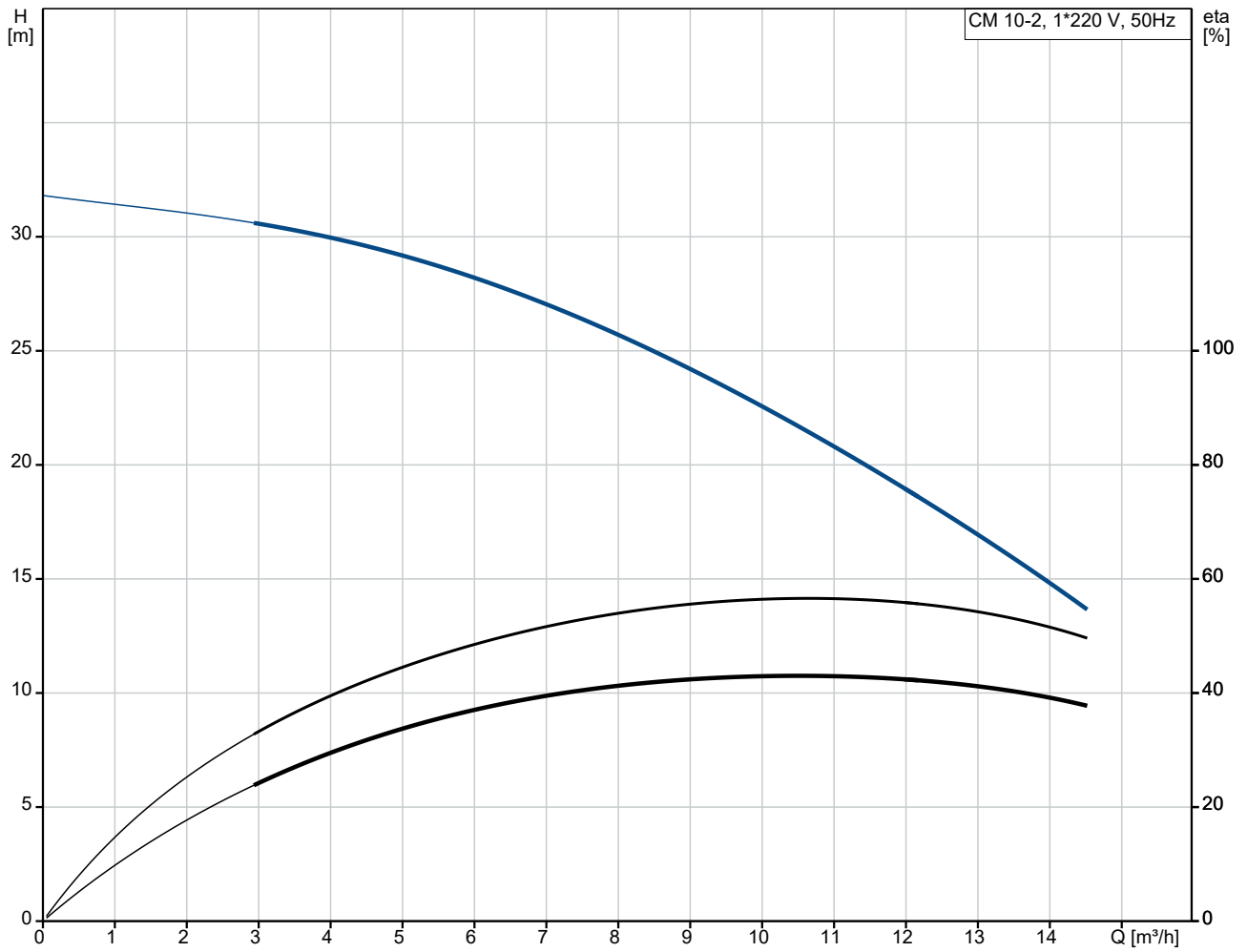


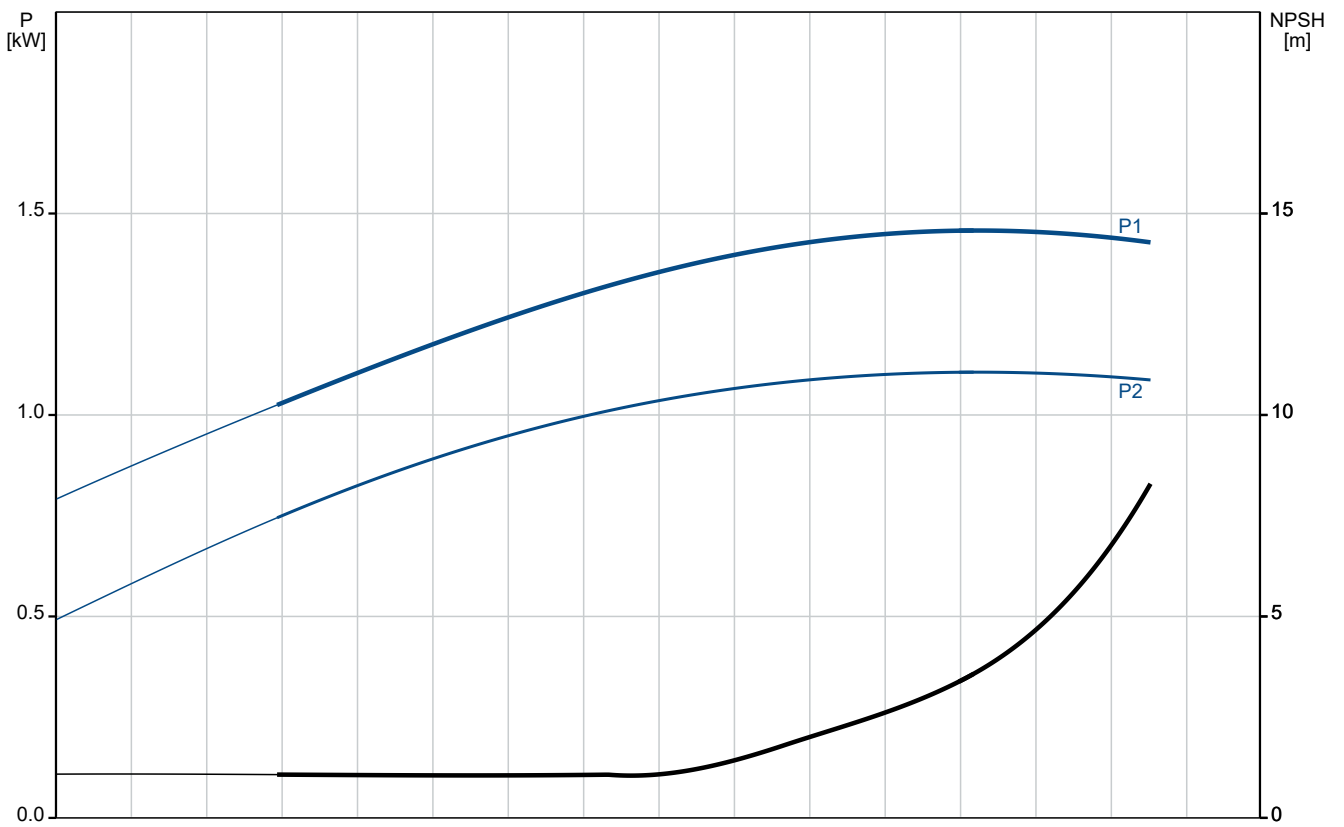
| Qty. | Description  |
|------|--|
| 1    | <p data-bbox="193 159 576 190"><b>CM 10-2 A-R-G-V-AQQV C-A-A-N</b></p>  <p data-bbox="592 506 1062 533" style="text-align: center;"><b>Note! Product picture may differ from actual product</b></p> <p data-bbox="193 539 480 566">Product No.: On request</p> <p data-bbox="193 600 1458 674">Compact, reliable, horizontal, multistage, end-suction centrifugal pump with axial suction port and radial discharge port. Pump materials in contact with the liquid are in high-grade stainless steel. The mechanical shaft seal is a special designed, unbalanced O-ring seal. Pipework connection is via internal Whitworth pipe threads, Rp (ISO 7/1).</p> <p data-bbox="193 712 1070 739">The pump is fitted with a 1-phase, foot-mounted, fan-cooled asynchronous motor.</p> <p data-bbox="193 772 300 799"><b>Controls:</b></p> <p data-bbox="193 799 636 826">Frequency converter:                   NONE</p> <p data-bbox="193 860 276 887"><b>Liquid:</b></p> <p data-bbox="193 887 632 913">Pumped liquid:                           Water</p> <p data-bbox="193 913 691 940">Liquid temperature range:           -20 .. 90 °C</p> <p data-bbox="193 940 632 967">Selected liquid temperature:       20 °C</p> <p data-bbox="193 967 695 994">Density:                                   998.2 kg/m<sup>3</sup></p> <p data-bbox="193 1037 316 1064"><b>Technical:</b></p> <p data-bbox="193 1064 820 1090">Pump speed on which pump data are based:   2900 rpm</p> <p data-bbox="193 1090 647 1117">Rated flow:                               10 m<sup>3</sup>/h</p> <p data-bbox="193 1117 655 1144">Rated head:                               24.61 m</p> <p data-bbox="193 1144 636 1171">Code for shaft seal:                   AQQV</p> <p data-bbox="193 1171 732 1198">Approvals:                               CE,EAC,UKCA</p> <p data-bbox="193 1198 753 1225">Approvals for drinking water:       WRAS,ACS,UBA</p> <p data-bbox="193 1225 759 1252">Curve tolerance:                       ISO9906:2012 3B</p> <p data-bbox="193 1303 309 1330"><b>Materials:</b></p> <p data-bbox="193 1330 724 1420">Pump housing:                           Stainless steel<br/>EN 1.4401<br/>AISI 316</p> <p data-bbox="193 1420 724 1509">Impeller:                                 Stainless steel<br/>EN 1.4401<br/>AISI 316</p> <p data-bbox="193 1543 325 1570"><b>Installation:</b></p> <p data-bbox="193 1570 691 1597">Range of ambient temperature:       -20 .. 55 °C</p> <p data-bbox="193 1597 636 1624">Maximum operating pressure:       16 bar</p> <p data-bbox="193 1624 718 1686">Max pressure at stated temp:       16 bar / 90 °C<br/>16 bar / 90 °C</p> <p data-bbox="193 1686 596 1713">Type of connection:                   Rp</p> <p data-bbox="193 1713 671 1740">Size of inlet connection:           1 1/2 inch</p> <p data-bbox="193 1740 671 1767">Size of outlet connection:          1 1/2 inch</p> <p data-bbox="193 1767 596 1794">Outlet position:                       12</p> <p data-bbox="193 1836 363 1863"><b>Electrical data:</b></p> <p data-bbox="193 1863 608 1890">Motor standard:                       IEC</p> <p data-bbox="193 1890 628 1917">Frame size:                             90SA</p> <p data-bbox="193 1917 643 1944">Rated power - P2:                     1.3 kW</p> <p data-bbox="193 1944 632 1971">Mains frequency:                     50 Hz</p> <p data-bbox="193 1971 584 1998">Suitable for 50/60 Hz:               N</p> <p data-bbox="193 1998 740 2024">Rated voltage:                         1 x 220-240 V V</p> <p data-bbox="193 2024 616 2051">Service factor:                       1.00</p> <p data-bbox="193 2051 667 2078">Rated current:                         8.4-8.0 A</p> |

| Qty. | Description  |
|------|--|
| 1    | <p>Starting current: 340-340 %<br/> Rated speed: 2710 rpm<br/> Enclosure class (IEC 34-5): IP55<br/> Insulation class (IEC 85): F<br/> Built-in motor protection: PTO<br/> Cable included (Yes/No): N</p> <p>Others:<br/> Terminal box position: 12<br/> Minimum efficiency index, MEI ≥: 0.52<br/> Net weight: 24.8 kg<br/> Gross weight: 27.3 kg<br/> Country of origin: TW<br/> Custom tariff no.: 84137042</p> |

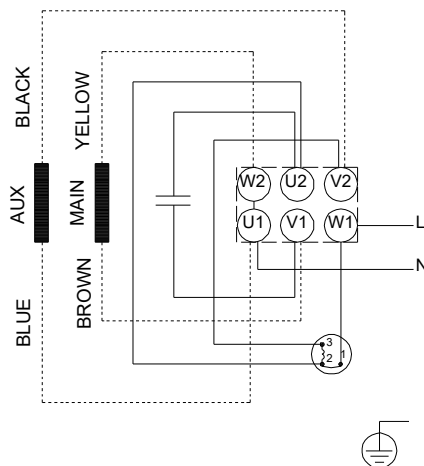
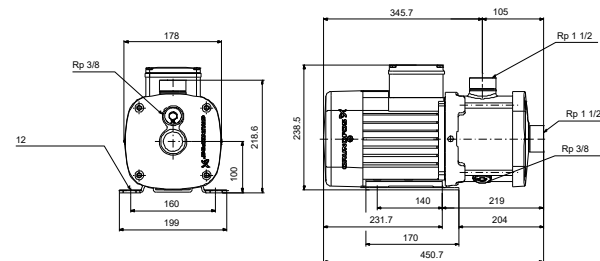
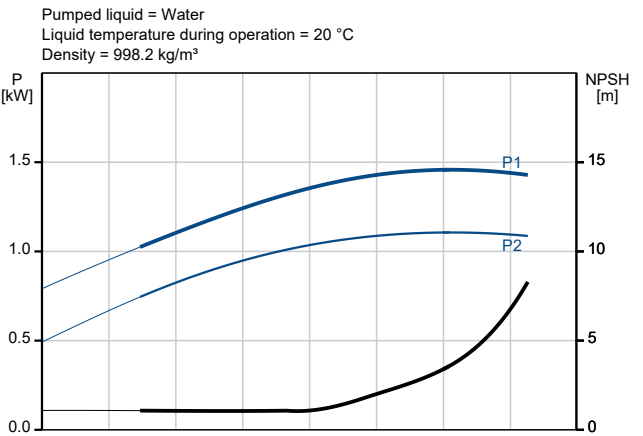
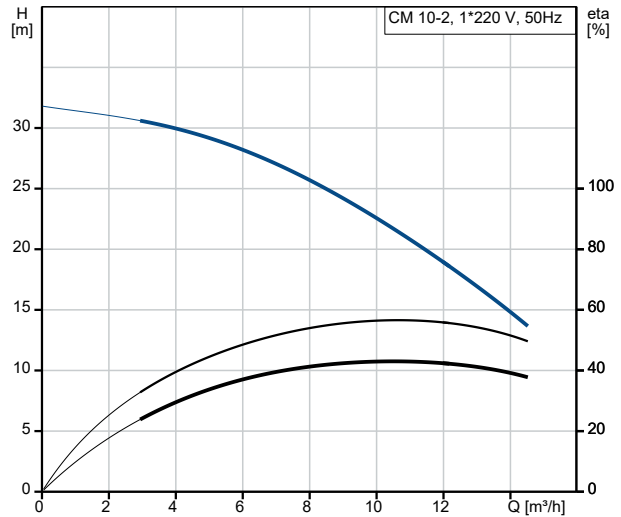
# On request CM 10-2 A-R-G-V-AQQV C-A-A-N 50 Hz



Pumped liquid = Water  
 Liquid temperature during operation = 20 °C  
 Density = 998.2 kg/m³



| Description                              | Value                           |
|--|---------------------------------|
| <b>General information:</b>              |                                 |
| Product name:                            | CM 10-2 A-R-G-V-AQQV<br>C-A-A-N |
| Product No:                              | On request                      |
| EAN number:                              | On request                      |
| <b>Technical:</b>                        |                                 |
| Pump speed on which pump data are based: | 2900 rpm                        |
| Rated flow:                              | 10 m <sup>3</sup> /h            |
| Rated head:                              | 24.61 m                         |
| Impellers:                               | 2                               |
| Code for shaft seal:                     | AQQV                            |
| Approvals:                               | CE,EAC,UKCA                     |
| Approvals for drinking water:            | WRAS,ACS,UBA                    |
| Curve tolerance:                         | ISO9906:2012 3B                 |
| Pump version:                            | A                               |
| Model:                                   | A                               |
| <b>Materials:</b>                        |                                 |
| Pump housing:                            | Stainless steel                 |
| Pump housing:                            | EN 1.4401                       |
| Pump housing:                            | AISI 316                        |
| Impeller:                                | Stainless steel                 |
| Impeller:                                | EN 1.4401                       |
| Impeller:                                | AISI 316                        |
| Material code:                           | G                               |
| Code for rubber:                         | V                               |
| <b>Installation:</b>                     |                                 |
| Range of ambient temperature:            | -20 .. 55 °C                    |
| Maximum operating pressure:              | 16 bar                          |
| Max pressure at stated temp:             | 16 bar / 90 °C                  |
| Max pressure at stated temp:             | 16 bar / 90 °C                  |
| Type of connection:                      | Rp                              |
| Size of inlet connection:                | 1 1/2 inch                      |
| Size of outlet connection:               | 1 1/2 inch                      |
| Outlet position:                         | 12                              |
| Connect code:                            | R                               |
| <b>Liquid:</b>                           |                                 |
| Pumped liquid:                           | Water                           |
| Liquid temperature range:                | -20 .. 90 °C                    |
| Selected liquid temperature:             | 20 °C                           |
| Density:                                 | 998.2 kg/m <sup>3</sup>         |
| <b>Electrical data:</b>                  |                                 |
| Motor standard:                          | IEC                             |
| Frame size:                              | 90SA                            |
| Rated power - P2:                        | 1.3 kW                          |
| Mains frequency:                         | 50 Hz                           |
| Suitable for 50/60 Hz:                   | N                               |
| Rated voltage:                           | 1 x 220-240 V V                 |
| Service factor:                          | 1.00                            |
| Rated current:                           | 8.4-8.0 A                       |
| Starting current:                        | 340-340 %                       |
| Rated speed:                             | 2710 rpm                        |
| Enclosure class (IEC 34-5):              | IP55                            |
| Insulation class (IEC 85):               | F                               |
| Built-in motor protection:               | PTO                             |
| Cable included (Yes/No):                 | N                               |
| <b>Controls:</b>                         |                                 |
| Frequency converter:                     | NONE                            |
| <b>Others:</b>                           |                                 |
| Terminal box position:                   | 12                              |
| Minimum efficiency index, MEI ≥:         | 0.52                            |
| Net weight:                              | 24.8 kg                         |
| Gross weight:                            | 27.3 kg                         |
| Country of origin:                       | TW                              |

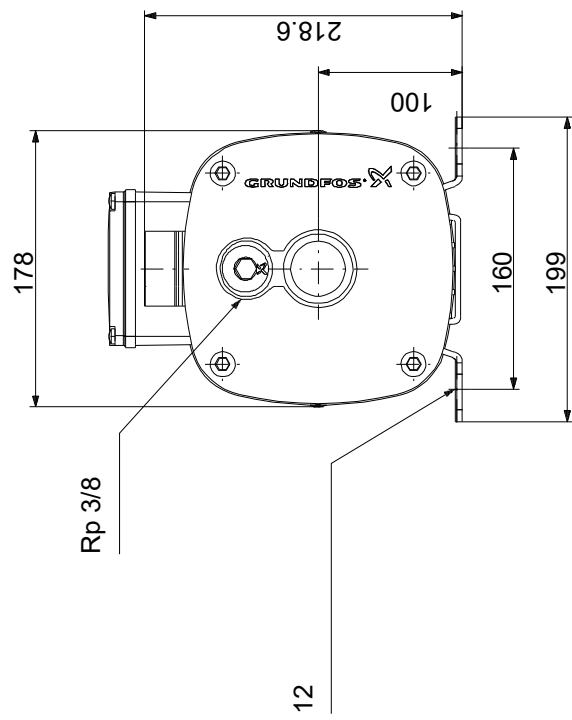
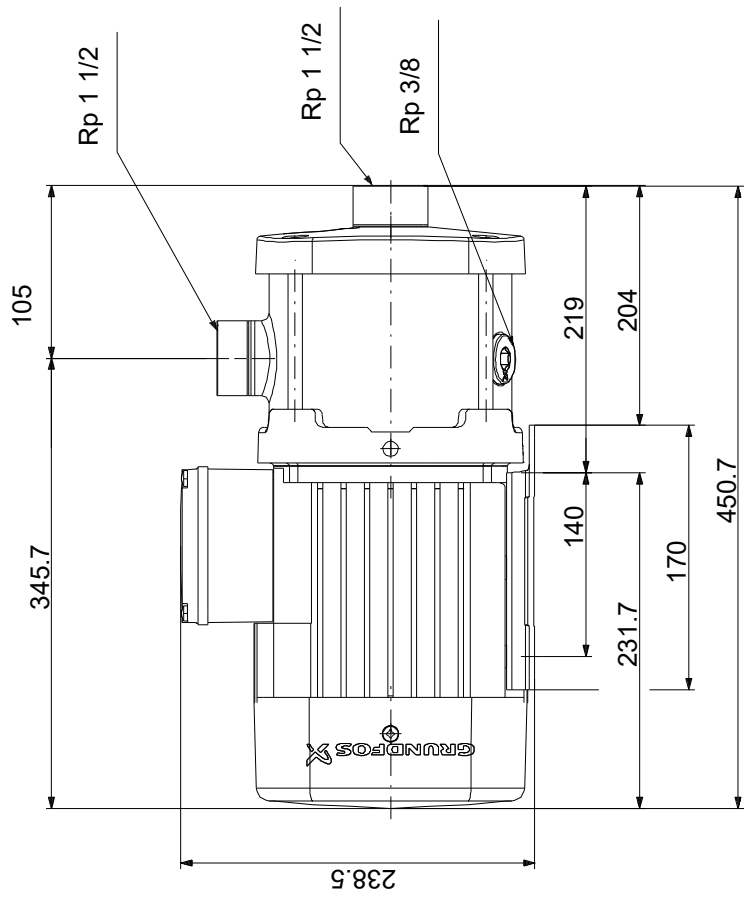


**Description****Value**

Custom tariff no.:

84137042

# On request CM 10-2 A-R-G-V-AQQV C-A-A-N 50 Hz



Note! All units are in [mm] unless others are stated.  
 Disclaimer: This simplified dimensional drawing does not show all details.