
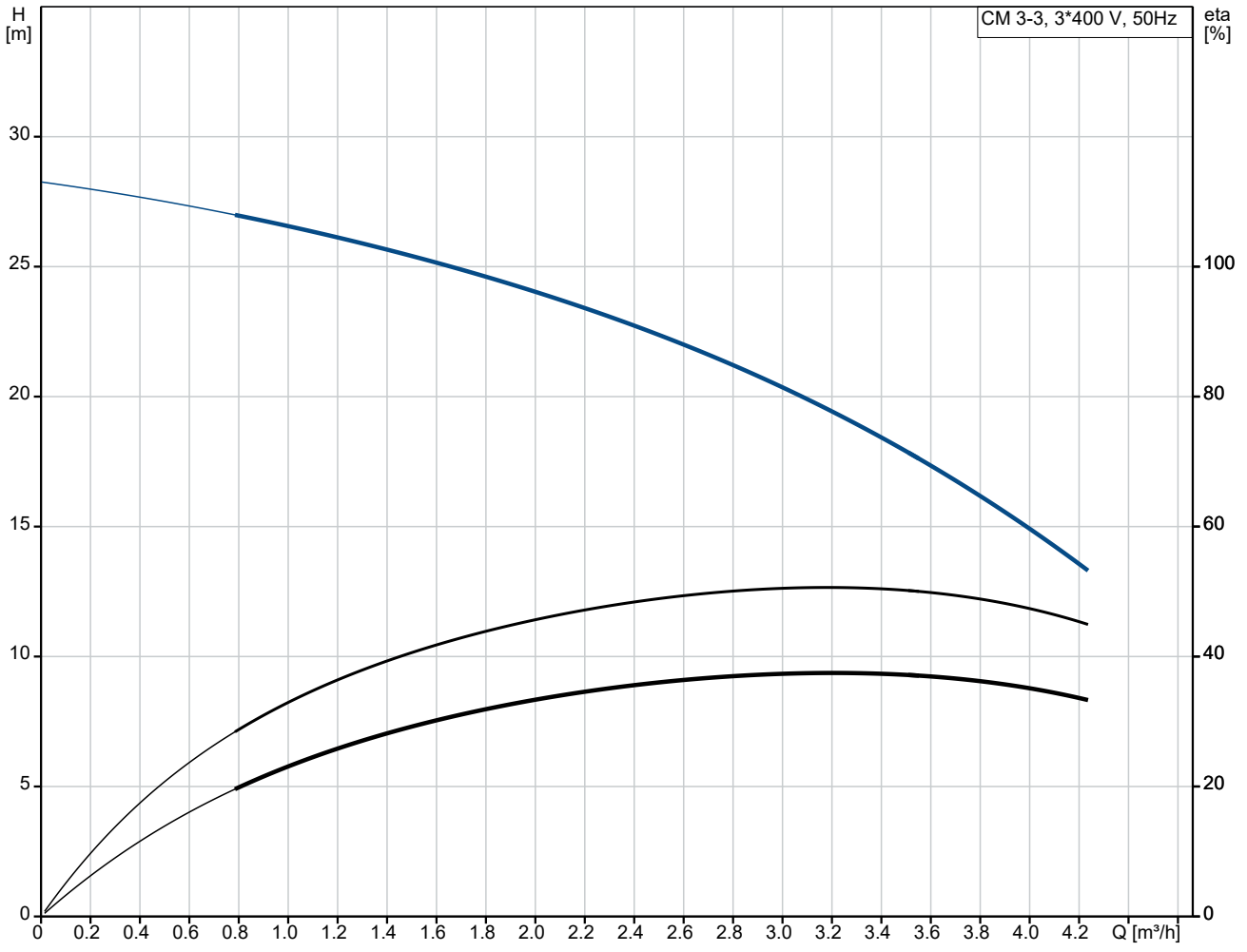


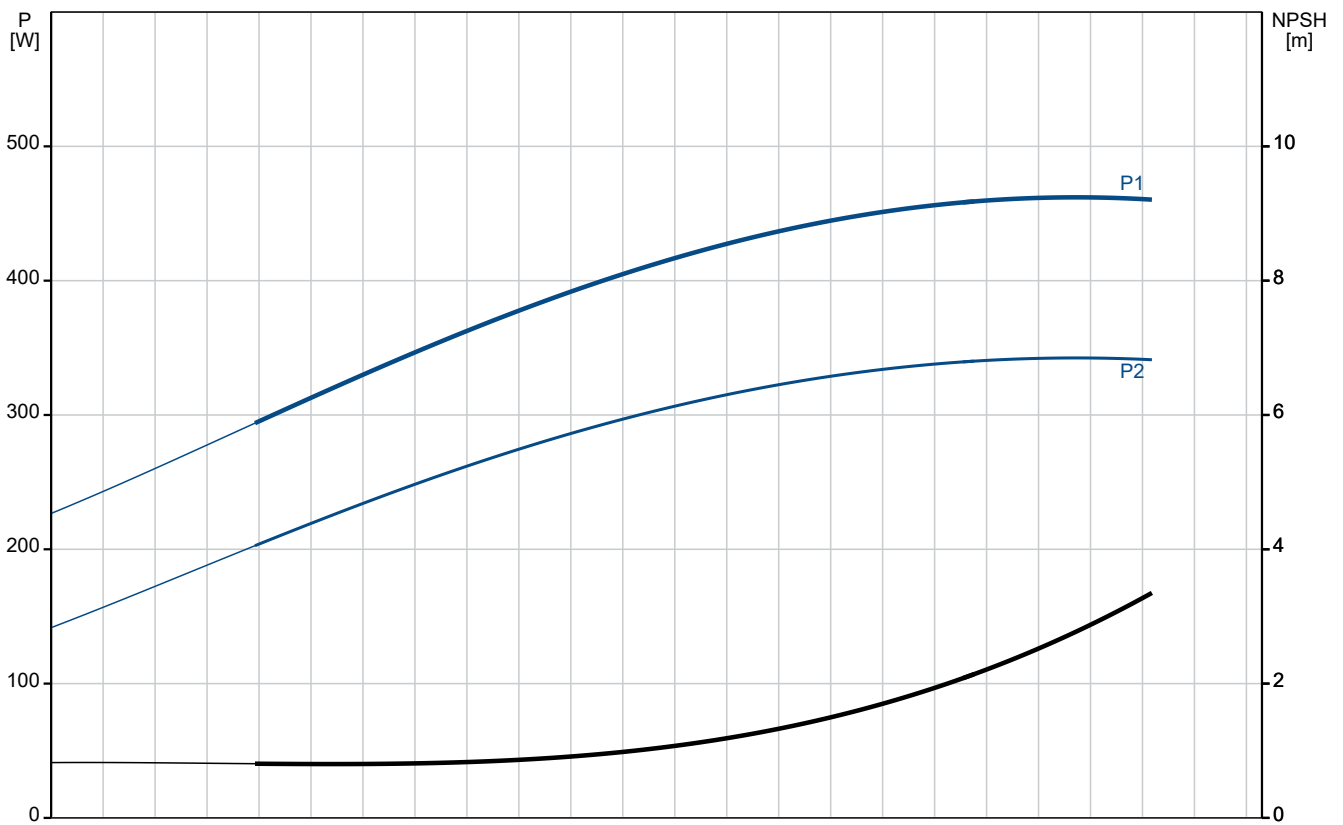
Qty.	Description
1	<p data-bbox="196 159 555 185">CM 3-3 A-R-A-E-AVBE F-A-A-N</p> <div data-bbox="256 297 507 450" style="text-align: center;">  </div> <p data-bbox="592 506 1062 528" style="text-align: center;">Note! Product picture may differ from actual product</p> <p data-bbox="196 539 480 562">Product No.: On request</p> <p data-bbox="196 600 1437 696">Compact, reliable, horizontal, multistage, end-suction centrifugal pump with axial suction port and radial discharge port. The shaft, impellers and chambers are made of stainless steel. The inlet and discharge parts are made of cast iron. The mechanical shaft seal is a special designed, unbalanced O-ring seal. Pipework connection is via internal Whitworth pipe threads, Rp (ISO 7/1).</p> <p data-bbox="196 712 1070 734">The pump is fitted with a 3-phase, foot-mounted, fan-cooled asynchronous motor.</p> <p data-bbox="196 775 300 797">Controls:</p> <p data-bbox="196 801 635 824">Frequency converter: NONE</p> <p data-bbox="196 864 272 887">Liquid:</p> <p data-bbox="196 891 635 913">Pumped liquid: Water</p> <p data-bbox="196 918 687 940">Liquid temperature range: -20 .. 90 °C</p> <p data-bbox="196 945 635 967">Selected liquid temperature: 20 °C</p> <p data-bbox="196 972 695 994">Density: 998.2 kg/m³</p> <p data-bbox="196 1034 312 1057">Technical:</p> <p data-bbox="196 1061 815 1084">Pump speed on which pump data are based: 2900 rpm</p> <p data-bbox="196 1088 655 1111">Rated flow: 3.1 m³/h</p> <p data-bbox="196 1115 655 1137">Rated head: 20.61 m</p> <p data-bbox="196 1142 635 1164">Code for shaft seal: AVBE</p> <p data-bbox="196 1169 730 1191">Approvals: CE,EAC,UKCA</p> <p data-bbox="196 1196 695 1218">Approvals for drinking water: ACS,NSF61</p> <p data-bbox="196 1223 759 1245">Curve tolerance: ISO9906:2012 3B</p> <p data-bbox="196 1285 312 1308">Materials:</p> <p data-bbox="196 1312 735 1413">Pump housing: Cast iron EN-GJL-200 ASTM A48-25A</p> <p data-bbox="196 1417 719 1503">Impeller: Stainless steel EN 1.4301 AISI 304</p> <p data-bbox="196 1543 328 1565">Installation:</p> <p data-bbox="196 1570 687 1592">Range of ambient temperature: -20 .. 55 °C</p> <p data-bbox="196 1597 635 1619">Maximum operating pressure: 10 bar</p> <p data-bbox="196 1624 715 1682">Max pressure at stated temp: 10 bar / 40 °C 6 bar / 90 °C</p> <p data-bbox="196 1686 592 1709">Type of connection: Rp</p> <p data-bbox="196 1713 635 1736">Size of inlet connection: 1 inch</p> <p data-bbox="196 1740 635 1762">Size of outlet connection: 1 inch</p> <p data-bbox="196 1767 592 1789">Outlet position: 12</p> <p data-bbox="196 1830 360 1852">Electrical data:</p> <p data-bbox="196 1856 608 1879">Motor standard: IEC</p> <p data-bbox="196 1883 608 1906">Frame size: 71A</p> <p data-bbox="196 1910 655 1933">Rated power - P2: 0.46 kW</p> <p data-bbox="196 1937 635 1960">Mains frequency: 50 Hz</p> <p data-bbox="196 1964 576 1986">Suitable for 50/60 Hz: N</p> <p data-bbox="196 1991 847 2013">Rated voltage: 3 x 220-240D/380-415V</p> <p data-bbox="196 2018 608 2040">Service factor: 1.00</p> <p data-bbox="196 2045 746 2067">Rated current: 2,0-2,2/1,0-1,2 A</p>

Qty.	Description
1	<p>Starting current: 490-530 % Rated speed: 2770-2820 rpm Enclosure class (IEC 34-5): IP55 Insulation class (IEC 85): F Built-in motor protection: NONE Cable included (Yes/No): N</p> <p>Others: Terminal box position: 12 Minimum efficiency index, MEI ≥: 0.7 Net weight: 11.3 kg Gross weight: 13.8 kg Country of origin: TW Custom tariff no.: 84137042</p>

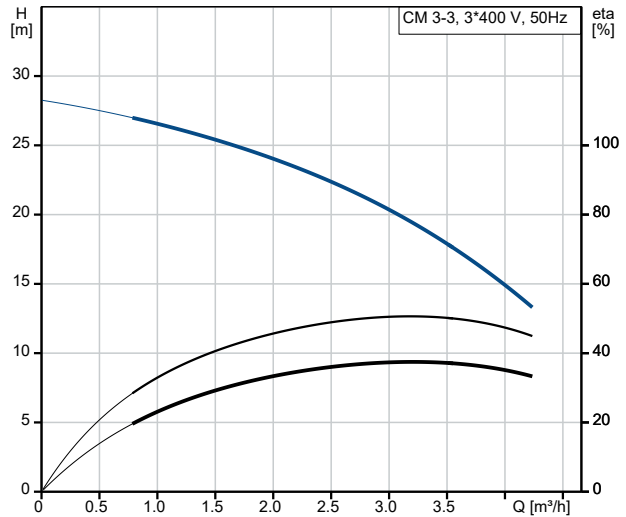
On request CM 3-3 A-R-A-E-AVBE F-A-A-N 50 Hz



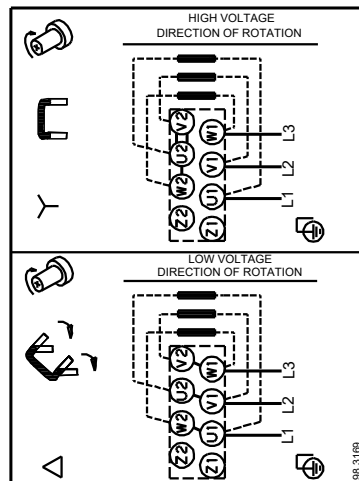
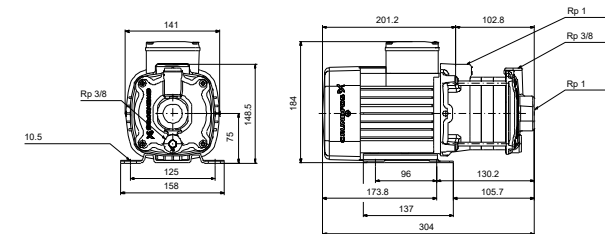
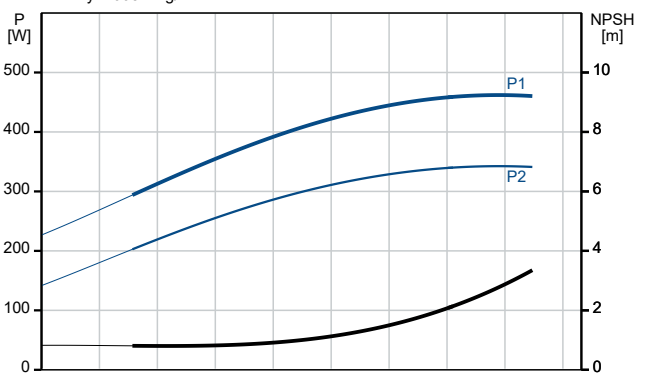
Pumped liquid = Water
 Liquid temperature during operation = 20 °C
 Density = 998.2 kg/m³



Description	Value
General information:	
Product name:	CM 3-3 A-R-A-E-AVBE F-A-A-N
Product No:	On request
EAN number:	On request
Technical:	
Pump speed on which pump data are based:	2900 rpm
Rated flow:	3.1 m ³ /h
Rated head:	20.61 m
Impellers:	3
Code for shaft seal:	AVBE
Approvals:	CE,EAC,UKCA
Approvals for drinking water:	ACS,NSF61
Curve tolerance:	ISO9906:2012 3B
Pump version:	A
Model:	A
Materials:	
Pump housing:	Cast iron
Pump housing:	EN-GJL-200
Pump housing:	ASTM A48-25A
Impeller:	Stainless steel
Impeller:	EN 1.4301
Impeller:	AISI 304
Material code:	A
Code for rubber:	E
Installation:	
Range of ambient temperature:	-20 .. 55 °C
Maximum operating pressure:	10 bar
Max pressure at stated temp:	10 bar / 40 °C
Max pressure at stated temp:	6 bar / 90 °C
Type of connection:	Rp
Size of inlet connection:	1 inch
Size of outlet connection:	1 inch
Outlet position:	12
Connect code:	R
Liquid:	
Pumped liquid:	Water
Liquid temperature range:	-20 .. 90 °C
Selected liquid temperature:	20 °C
Density:	998.2 kg/m ³
Electrical data:	
Motor standard:	IEC
Frame size:	71A
Rated power - P2:	0.46 kW
Mains frequency:	50 Hz
Suitable for 50/60 Hz:	N
Rated voltage:	3 x 220-240D/380-415Y V
Service factor:	1.00
Rated current:	2,0-2,2/1,0-1,2 A
Starting current:	490-530 %
Rated speed:	2770-2820 rpm
Enclosure class (IEC 34-5):	IP55
Insulation class (IEC 85):	F
Built-in motor protection:	NONE
Cable included (Yes/No):	N
Controls:	
Frequency converter:	NONE
Others:	
Terminal box position:	12
Minimum efficiency index, MEI ≥:	0.7
Net weight:	11.3 kg
Gross weight:	13.8 kg
Country of origin:	TW



Pumped liquid = Water
Liquid temperature during operation = 20 °C
Density = 998.2 kg/m³



Description**Value**

Custom tariff no.:

84137042

